



The Dell Primary School

Governing Body Annual Report to Parents 2015-16



“...all about learning”

Dear Parents,

It is a pleasure to again introduce this year's Governors' Annual Report. It has been an incredibly busy year for everyone with many successes. As always we face a number of challenges in the year ahead!

We welcomed two new parent governors: Mrs Emma Becker and Mrs Clare Adams following their elections last October, one new Local Authority Governor: Mr Graham Bate in November, and also the return of County Councillor Peter Farley in July for another term of office. All governors have been active during the year visiting the school in their capacity of Link Governors for various curriculum areas, sitting on various committees including finance, and a busy round of staff appointments.

This year we decided to create 2 new Teaching and Learning Responsibility (TLR) posts for the role of leading the development of excellence across in the school in 2 key areas: Maths & Numeracy and English & Literacy. Mr Matt Nicholas & Mrs Hannah Adams were appointed following internal interviews.

In the summer Mrs Hannah Kilbourn successfully achieved a Deputy Headship and resigned as class teacher and Key Stage 2 Leader after many years at The Dell. We wish her every success in her new role. The staff appointments panel reconvened to appoint a new KS2 Leader. Mr Matt Nicholas was successful and relinquished his recently acquired Maths & Numeracy Leader post which was then taken up by Mrs Lesa Davies. Finally we appointed a new class teacher: following an online Skype interview, Mr Seb Leer has joined us after a year teaching in Malaysia.

Last year we continued to build on our pupil performance figures and were successful in gaining 'yellow' categorisation as a well-performing school with good leadership, the first time this process has been conducted across Wales. We still aspire to 'green' – the top level, now our next challenge.

In March, a real highlight for us all, was the achievement of 'The NACE Challenge Award for the More Able & Talented Pupils'. We are now one of the few Welsh schools to have gained this standard. Our thanks go to Mrs Hannah Adams who led the process to meet the quality standards required.

The world around us continues to provide many examples of the external and personal challenges individuals of all ages face. This year, the school has developed 'The Sunshine Room' to provide some space and support for some of our pupils who are experiencing family bereavement, anxiety and other personal challenges. The Governing Body has been delighted to support this initiative. We are fortunate that Mrs Cass, one of our Learning Support Assistants, is skilled in this area and can provide this support for your children alongside her other work.

One of the biggest challenges we now face at The Dell for 2016-17 and beyond is finance. Last year, despite making cut backs in many areas, we spent more than our annual income, we managed because we carried forward a modest budget surplus from previous years. However that has now been spent. We face this challenge again this year with little hope of increased funding. We are indebted to the PTA who have raised much money to buy school equipment during the year and for organising the entry into the One Family Foundation awards this summer for which you all voted and we won £5000 for new play equipment.

My role as Chair is often very time consuming but always rewarding. It is a privilege to be able to work alongside a team of dedicated staff who work exceptionally hard together with humour and a smile to enable your children to enjoy all their opportunities to learn and feel safe. They are only able to do that with the exceptional leadership that our Headteacher Steve King has brought to his team and the children at The Dell. As a result the school continues to improve and create excitement, fun and challenge for all. May the journey continue!

Many thanks to you all,



Ann Holloway

To find out more about our governing body **CLICK HERE** or visit our website dell.monmouthshire.sch.uk

Details of the Governing Body

Governorship	Name	Term of Office Began	Term of Office Ends
Community (Chair)	Mrs Ann Holloway	19/1/2013	18/1/2017
Community (Vice Chair)	Mr Andre Haynes	5/7/2015	04/7/2019
Community	Mr Jason Bradbury	10/2/2015	09/2/2019
Parent	Mrs Emma Becker	12/10/2015	11/10/2019
Parent	Mr Andrew Sithers	6/7/2014	5/7/2018
Parent	Mrs Clare Adams	12/10/2015	11/10/2019
Parent	Mrs Tanya Sutton	6/7/2014	5/7/2018
Local Authority	C. Cllr Ann Webb	24/9/2013	23/9/2017
Local Authority	C. Cllr Peter Farley	20/7/2016	19/7/2020
Local Authority	Mr Graham Bate	9/11/2015	8/11/2019
Minor Authority	Cllr Carole Oakes (Mathern CC)	2/12/2014	1/12/2018
Support Staff	Mrs Julie Williams	26/2/2013	25/2/2017
Teacher	Mrs Hannah Adams	10/7/2014	9/7/2018
Head Teacher	Mr Steve King	Permanent	

The clerk to the governing body is Liz Everson who works for the Education Achievement Service on behalf of Monmouthshire County Council. She can be contacted Llanwern High School, Hartridge Farm Rd, Newport, NP18 2YE. The chair of the governing body is Mrs Ann Holloway. She can be contacted via the school office.

Arrangements for Next Election of Parent Governors

At the time of writing there are no vacancies on the governing body. When an existing parent governor comes to the end of their term of office, or if they resign mid-term, the school will hold a ballot to elect a new parent governor. At that time, the school will write to all parents advising of the ballot and seeking nominations for prospective candidates from the parent body.

School Attendance Targets

Our actual school attendance in 2015/16 was 96.5%, which was in line with our target of 96.5% and this put our attendance in the top 25% of schools across Wales. This attendance level exceeds the local authority's target of 95.8% for the same period. During the year, there was 3% authorised absence and 0.5% unauthorised absence. While unauthorised absence reduced since 2014/15, authorised absence increased by 0.4%. Our school target for 2016-17 is 96.6%.

There were no permanent exclusions in 2015/16 though there were ten instances of fixed term exclusions.

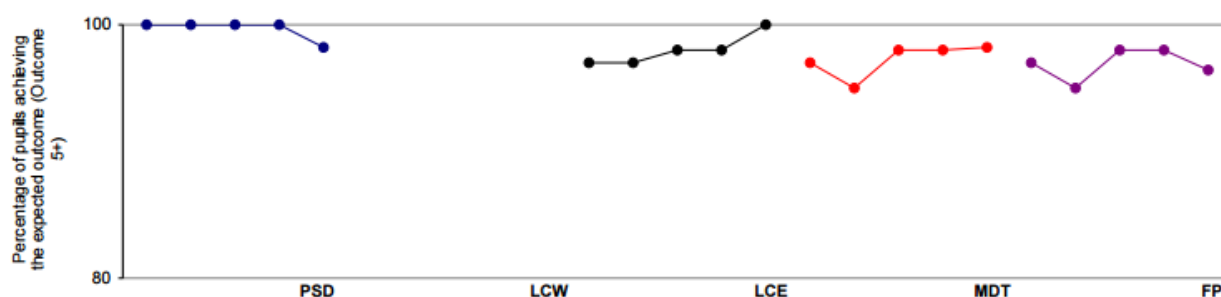
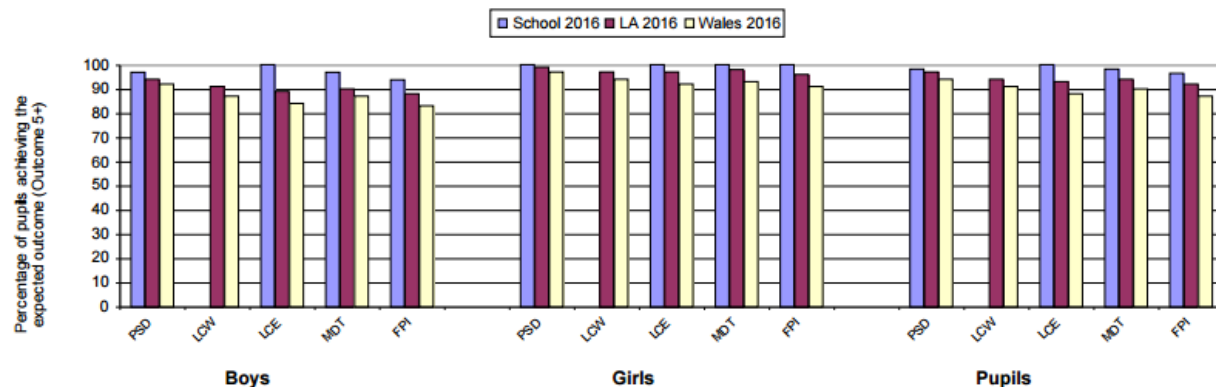
To find out more about our attendance visit www.mylocalschool.wales.gov.uk.

Comparative Performance Data

Foundation Phase

Percentage of boys, girls, and pupils achieving at least the expected outcome (Outcome 5+):

	Boys			Girls			Pupils		
	School 2016	LA 2016	Wales 2016	School 2016	LA 2016	Wales 2016	School 2016	LA 2016	Wales 2016
PSD	97	94	92	100	99	97	98	97	94
LCW	0	91	87	0	97	94	0	94	91
LCE	100	89	84	100	97	92	100	93	88
MDT	97	90	87	100	98	93	98	94	90
FPI	94	88	83	100	96	91	96	92	87



Contextual Information

Benchmarked against schools with a similar percentage of pupils eligible for free school meals.

School's results shown in greyed boxes. Column headings refer to...

Quarter 1 School is in the top 25 per cent.

Quarter 2 School is in the top 50 per cent but not the top 25 per cent.

Quarter 3 School is in the bottom 50 per cent but not the bottom 25 per cent.

Quarter 4 School is in the bottom 25 per cent.

Free School Meal Group

Less than 8 percent eligible for FSM

	Quarter 4	Lower Quartile	Quarter 3	Median	Quarter 2	Upper Quartile	Quarter 1
PSD		97	98	100		100	
LCW		86		94		100	
LCE		91		96		100	100
MDT		91		96	98	100	
FPI		88		93	96	100	

The benchmarks have been calculated using a three-year average for Free School Meal data.

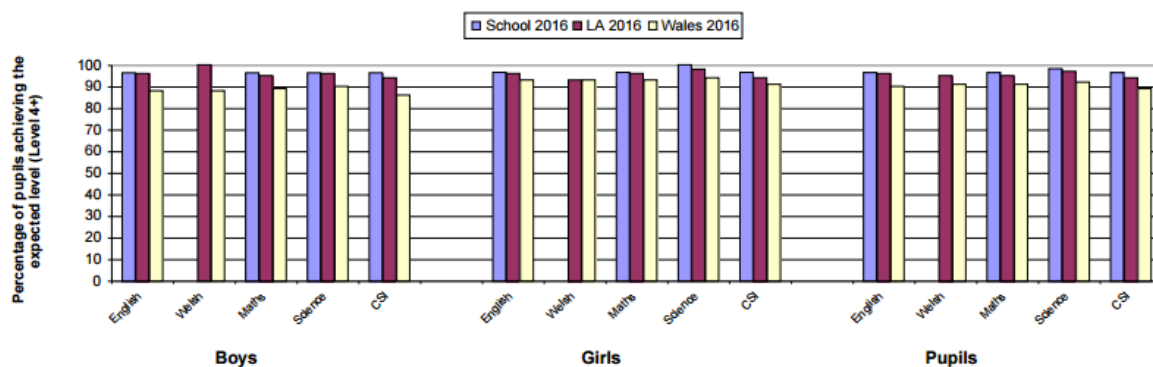
Notes:

Areas of learning: PSD = Personal and social development, well-being and cultural diversity; LCW = Language, literacy and communication skills (in Welsh); LCE = Language, literacy and communication skills (in English); MDT = Mathematical development; FPI = Foundation Phase Indicator. To achieve the FPI, a pupil must achieve at least the expected outcome (Outcome 5+) in both PSD and MDT and either LCW or LCE.

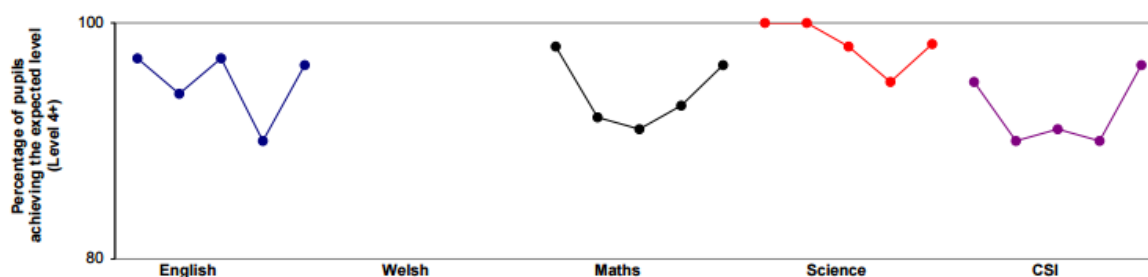
Key Stage 2

Percentage of boys, girls, and pupils achieving at least the expected level (Level 4+):

	Boys			Girls			Pupils		
	School 2016	LA 2016	Wales 2016	School 2016	LA 2016	Wales 2016	School 2016	LA 2016	Wales 2016
English	96	96	88	97	96	93	96	96	90
Welsh	0	100	88	0	93	93	0	95	91
Maths	96	95	89	97	96	93	96	95	91
Science	96	96	90	100	98	94	98	97	92
CSI	96	94	86	97	94	91	96	94	89



School Performance over time (2012 - 2016)



Contextual Information

Benchmarked against schools with a similar percentage of pupils eligible for free school meals.

School's results shown in greyed boxes. Column headings refer to...

Quarter 1 School is in the top 25 per cent.

Quarter 2 School is in the top 50 per cent but not the top 25 per cent.

Quarter 3 School is in the bottom 50 per cent but not the bottom 25 per cent.

Quarter 4 School is in the bottom 25 per cent.

Free School Meal Group

Less than 8 percent eligible for FSM

	Quarter 4	Lower Quartile	Quarter 3	Median	Quarter 2	Upper Quartile	Quarter 1
English		93	96	98		100	
Welsh		88		97		100	
Maths		93	96	98		100	
Science		95	98	100		100	
CSI		91		96	96	100	

The benchmarks have been calculated using a three-year average for Free School Meal data.

Notes:

Figures for Welsh refer to attainment in Welsh first language only.

CSI = Core Subject Indicator. To achieve the CSI a pupil must achieve at least the expected level 4 in both Mathematics and Science and either English or Welsh first language.

The data is for NATIONALLY EXPECTED level or above only. As stated in the introduction on page 2, in 2015 our Year 6 cohort had a larger than usual number of pupils with additional learning needs. While the Level 4+ data reflects this, the Level 5+ (HIGHER THAN NATIONALLY EXPECTED LEVEL) data shows the significant attainment of pupils at The Dell.

To find out more about our academic performance [CLICK HERE](#) or visit our website dell.monmouthshire.sch.uk and go to the '24/7 Office Page' then 'Key School Documents' page.

School Improvement Targets

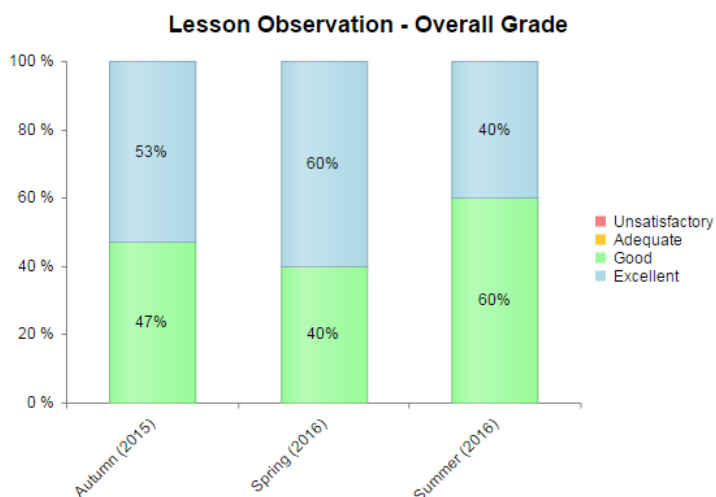
These priorities were formulated in July 2015. We aimed to make significant progress on each of these priorities by the end of the academic year. The five main priorities for the school year were:

Priority	Action
1	To further improve provision and outcomes in English across the school by addressing data and areas for development identified through self evaluation activities.
2	To further improve provision and outcomes in Maths across the school by addressing data and areas for development identified through self evaluation activities.
3	Minimise performance and attainment gap between Free School Meal and Non-Free School Meal pupils.
4	To improve provision and raise standards in the use of technology for learning.
5	To review and update the programmes of study for teaching science concepts, skills & processes across the school.

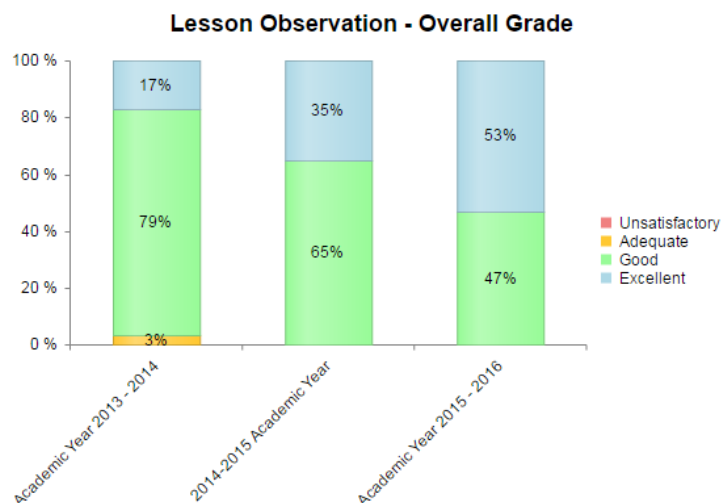
To find out more about our school improvement targets [CLICK HERE](#) or visit our website dell.monmouthshire.sch.uk and go to the '24/7 Office Page' then 'Key School Documents' page.

Quality of Teaching

We use Estyn's grading system for judging the quality of lessons observed in school. This scale goes from 'Excellent' to 'Unsatisfactory' and is shown on the right.



Over the last three years we have moved away from any unsatisfactory and adequate teaching and the graphs (right) show the judgements made by Strategic Leadership Team members from 2013-2016.



Actions to Promote Healthy Eating and Drinking

From the start of the school year in September 2015, the school worked to the new Food and Fitness Policy which restricted break time snacks to fruit and vegetables only. This message was carefully communicated to pupils and parents and was very well supported by all. The difference in healthy eating habits and patterns has been clear and the reduction in litter and waste management has also

been very significant.

Our Healthy School Team's work led to our being awarded our fourth leaf for Phase 4 of the Healthy Schools scheme.

Our Eco Team worked towards our third Green Flag award which we hope to achieve in January 2017. The Parent and Teachers' Association sold water bottles for children to use in class and we continued to provide drinking water dispensers in the infant and junior corridors as well the staffroom. Pupils in Foundation Phase learned about healthy eating as part of their curriculum work.



To find out more about school dinners [CLICK HERE](#) or visit www.monmouthshire.gov.uk

Financial Statement

MONMOUTHSHIRE CHILDREN AND YOUNG PEOPLE DIRECTORATE

School Budget Share for Financial Year 1st of April 2016 to 31st March 2017

THE DELL PRIMARY

(a) Age-Weighted Pupil Units

Age Group	<u>Funding</u> <u>Per Pupil</u> £	<u>Actual</u> <u>September 2015</u> <u>Pupil Numbers</u>	<u>Total</u> <u>Funds</u> <u>Allocated</u>	
3-4	2236.7	0	-	
4-5	2218.5	60	133,108.23	
5-6	2218.5	60	133,108.23	
6-7	2218.5	58	128,671.29	
7-8	2183.9	60	131,035.58	
8-9	2183.9	60	131,035.58	
9-10	2183.9	59	128,851.65	
10-11	2183.9	55	120,115.95	
		<u>412</u>	<u>905,926.53</u>	905,927

(b) Premises and Other Factors

Building Maintenance	5,725	
Caretaking	16,736	
Cleaning	12,860	
Energy	14,177	
Rates	21,749	
Grounds Maintenance	8,160	
Governors Services	999	
Finance and Management Support Services	1,655	
Central ICT	2,406	
Maternity	9,909	
Creditor Payments	1,320	
Personnel Services	2,633	
Joint Leisure Facilities	3,719	
Lifeguards	1,133	
Library Service	-	
Protection	-	
Deprivation	-	
NNEB Funding	19,344	
Threshold	-	
Lump Sum	104,021	
	<u>226,546</u>	226,546

(c) Special Needs

Lump Sum	21,754	
Band Funding	14,595	
	<u>36,349</u>	
Unit Funding	-	
	<u>36,349</u>	36,349
TOTAL FUNDING		1,168,821

2015/16 End of Year Summary

Total General Income	206,263
Total Funding	1,169,042
TOTAL INCOME	1,375,305
Total Employee Costs	1,170,046
Total Supplies & Services	72,037
Total Premises Costs	88,163
Total Agency and Contracted Costs	73,863
Total Transport Costs	4,140
TOTAL EXPENDITURE	1,408,249

In 2015/16, the school spent 84.8% of its total funding on staffing (£1,146,376). The main, non-operational, costs for 2015/16 went on furniture and equipment for our Sunshine Room (nurture & wellbeing) as well as redecorating the main corridor area.

During 2015/16 the school received commission of £1112.07 (Tesco Uniform Shop - £210.11, Colorfoto - £901.96). We received three donations totalling £350 towards F1 Club and we received £85.75 from Coventry Building Society under their 'Save for School' Scheme.

The PTA funded Year 1 play equipment and Year 6 wellington boot storage (£586.20), All-weather

playground surfacing (£4766), a new remote control projector screen in the hall (£1142) and Leavers' Yearbooks (£500). Total donations and commission for the year was £8542.02.

The school has a policy of not paying expenses to school governors.

To find out more about our budget and funding visit www.myllocalschool.wales.gov.uk.

Sports and Extracurricular Activities

Each week, all classes receive one lesson of physical education through Prostars, a professional sports coaching organisation, who cover teachers' statutory non-contact time allocation. Class teachers provide a second PE session, which might (at some time in the year) be a swimming lesson. In 2015/16 we offered an average of 17 extra-curricular clubs (plus daily Breakfast Club and After School Club).

In the 2016 School Sport Survey, 82% of pupils said they always feel completely comfortable taking part in sporting activities, lessons and games. The most popular extra-curricular clubs were football (58%), swimming (36%) and athletics/running (71%).

Three pupils undertook training and were appointed as Sports Ambassadors working with younger children and promoting sports and fitness. They also coordinated the collection of Sainsbury's Active Kids vouchers.

Our football team got through to the final of a local football competition at Blakeney Primary School and were later the winners of the Monmouthshire Schools Football Finals. Pupils from Y3-6 competed in the Chepstow Primary Schools' Cross Country Festival at Chepstow Racecourse. Our girls' team took part in the FIFA 'Live Your Goals Festival'.

Pupils took part in netball, hockey and football tournaments in Chepstow, Caldicot and Cwmbran while our Year 6 PlayMakers undertook training to support other younger pupils during break and games time. Our three Sports Ambassadors organised school rugby and football tournaments as well as coordinated the collection of Sainsbury's Active Kids vouchers. They also helped organise the Sports Relief staff three-legged race.



To find out more about PE and School Sport at The Dell visit www.twitter.com/thedellsport

Community Links

The governing body are keen to develop links with the local community and to give pupils a sense of belonging as active citizens in their local, national and global community.



Visits

Reception classes visited Magor Marsh, Techniquet and Chepstow High Street. Year 1 visited Chepstow Library and the Dean Forest Railway. Year 2 visited St. Fagan's Museum as part of their 'Houses & Homes' project, Chepstow Baptist Church and Weston Super Mere. Year 3 visited Caerleon as part of their Roman project. Year 4 visited Hampton Court as well as Chepstow Library for a workshop with children's poet Stewart Henderson. Year 5 visited St. Fagans as part of their work on Victorians and they watched students at Chepstow School perform *Beauty & The Beast*. Year 6 learned about practical maths when they visited Chepstow Racecourse on race day and they learned about World War 2 at the Steam Museum in Swindon. Their year started on a high with their week long residential trip to Gilwern Outdoor Centre and they later visited the Drill Hall in Chepstow to watch a 'Ruff Guide to Shakespeare'. Year 6 classes also visited the Newport Centre to watch the BBC National Orchestra of Wales perform 'Ten Pieces'.

Pupils in Year 6 worked in a team at Chepstow School during the cluster Dragons' Den competition while others in the F1 Club took part in a national design competition in Swansea and also visited SPTS Technologies in Newport. Our Eco team visited the One Planet Centre in Abergavenny and also led the school on 'Clean for The Queen' day which also saw them clearing up the streets in the town centre. Our Dell FM presenter team visited the studios of Heart Radio Wales in Cardiff Bay and recorded some audio for the following day's show. Mr King visited Tianyi Jinxia Primary, our new partner school in Xiangtan, China.



Visitors

Reception pupils learned about minibeasts during their visit from Zoolab and about visual impairment when guide dog 'Daisy' visited with her owner. Year 4 learned about bread making from Braces Bread while Year 5 had weekly Mandarin lessons with a visiting teacher, had some 'wow' science demonstrations with Explorerdome scientists and got inside computers during a workshop with technocamps. Year 6's visitors talked set them '7Puzzle' challenges while others presented architectural workshops and the Tetrahedron challenge.

Children's authors Tom Percival, MG Leonard and Katherine Rundell all visited to talk about writing for a living & provided much inspiration throughout the year. Colleagues from Chepstow Library visited to talk to the children about the 'Big Friendly Read' project. Chepstow Fire Station fire-fighters visited to talk to the children about fire safety and PC Finnister visited to work with all classes during the year on the Gwent Police Core Programme. Breakfast radio DJs Jagger & Woody from Heart Radio Wales visited and interviewed a number of children for their breakfast show and classes were also enjoyed a visit from the Welsh Birds of Prey Centre. Cllr Rook visited to present two winners with their prizes from the Chepstow in Bloom competition and Chepstow Male Voice Choir performed two concerts on St. David's Day. We welcomed three teachers from Sumpert in the Czech Republic.



Parents & Grandparents

We held three 'Grandparents Open Afternoons' to show grandparents how their loved ones spend their day and learn and we held five learning walks for parents focussing on literacy, numeracy and Foundation Phase. 'Meet The Teacher' sessions at the start of the year helped to develop closer links between home and school and we held two Parent Forum meetings as well as termly Sharing Day; an opportunity for parents to drop in and share their child's learning in the hall.

Parent and Teacher Association

Our PTA had a fantastic year and made a huge contribution to the running of the school. They funded a new backdrop / projection screen in the school hall to replace the current heavy & cumbersome stage back panels, wellington boot storage for Years 4 & 5 as space is limited in the demountable and toys & equipment to support role play learning in Year 1. They made a donation towards the Year 6 Leavers' Book, a new portable PA system for the school singing groups to use and to be used for other off-site / out-door performances & events and they funded another child place at Yankho School in Malawi to give the gift of education to a child who wouldn't otherwise be able to afford it. They were also successful in an application to Hasbro for a donation of toys / games to the school. Perhaps their biggest project and benefit was the re surfacing of part of the infant playground with an all-weather surface. The school are enormously grateful for the time and skills that the PTA provide in support.



Continual Professional Development for Staff

All staff undertook training on restorative approaches with a leading international consultant and a number of colleagues undertook TEAM Teach training ensuring they had the requisite skills for restraining and positively handling pupils who present extremes of behaviour. Staff undertook training on Looked After Children, driving minibuses, safeguarding, language builders' programme, manual handling, swimming, dyslexia, early years pedagogy, ICT and curriculum reform.



Charity

To start the year, a team of staff raised over £2000 for Velindre Cancer Centre by undertaking a sponsored Zip Wire Challenge at the National Dive Centre. Year 2 raised £96 for Severn Area Search & Rescue (SARA) ahead of their visit to the centre in Beachley and our sale of produce after Harvest Assemblies raised £263.50 for Chepstow Food Bank. Children raised £2248.35 for NSPCC by organising sporting activities during their games lessons and this year's sale of poppies raised £236.75 for the Royal British Legion. Children in Need day saw children dressing as superheroes and raising £562.28, Sport Relief raised £629 while 'Make Some Noise' Day raised £315 for Heart Radio Wales' children's charity. Dell Book Day raised £100.25 to pay the school fees of Ruth & Aisha, two pupils at Yankho Elementary our partner school in Malawi while the sale of knitted chicks raised a further £250 for Velindre Cancer Centre and children sent off 270 and raised a further £270 to Chepstow Rotary during their Christmas Shoebox Appeal. **That's a whopping £6971.13 for local, national and international charities!**



Notable Achievements in & Out of School

One Y5 pupil became the British u9 Chess Champion while a Y6 pupil won the u10 Welsh Tennis Championships. 8 pupils were selected to take part in the Monmouthshire County Swimming Championships and a Y3 pupil became the youngest in Wales to be awarded a black belt in Tai Kwando and also became the UK Tai Kwando Silver Champion. A Y4 pupil became the Welsh Junior Chess Champion while two pupils were winners in the Inter-school gardening challenge organised by

Chepstow & District Gardening Club. Three Y6 pupils were winners in the Monmouthshire & Chepstow Beacon 2016 Calendar Competition while 24 others were runners up! The Dell had 4 winners in the Chepstow Fire Station Firework Safety Poster competition and 10 pupils in Year 6 won awards in the National Primary Maths Challenge. Our chess players were first in the English Chess Federation u11 Open in Oxford and were also crowned Regional Champions while many got through to the Mega Finals. Two pupils were awarded £250 for their development by the ECF. One Y6 pupil won Chepstow Library's Reading Chair Competition having her design created for the library.



Other Community Support

Year 2 undertook Kerbcraft road safety sessions through Monmouthshire CC. We retained the Ruth Sweeting Cup for the most number of entries to the Chepstow Show and won a number of other awards. We supported Chepstow Food Bank with Harvest sales, earned £223 worth of books for school following our Scholastic Book Fayres. The Mini Superstar Singers performed for residents at Severn View and Castle Court Nursing Homes and two Year 2 pupils were winners in the Castle Court Christmas Competition. We celebrated Fairtrade Fortnight with awareness raising and pupils took part in My Money Week which was supported by the Financial Education Trust. We worked with Transition Chepstow who replanted the flower bed outside the school and provided seeds for the Conservation Area and all pupils had a day to 'Go Red for the Eisteddfod'.



To find out more about our community work visit www.twitter.com/thedellcommunity

The School's Curriculum and Organisation of Teaching

The school follows the national (Wales) programme of study for pupils aged 3-19 years. It is made up of the following seven areas:

- The Foundation Phase
- Skills development
- The national curriculum (Key Stage 2)

- Personal and social education
- Sex education
- Careers and the world of work
- Religious education.

The school curriculum is learner focussed, places an emphasis on skills development and ensures that it is appropriate for the specific needs of Wales.

Children join The Dell when they are four, going on five, and for their first three years are taught the Foundation Phase Framework curriculum. This consists of seven areas of learning:

- Personal and Social Development, Well-being and Cultural Diversity
- Language, Literacy and Communication Skills
- Mathematical Development
- Welsh Language Development
- Knowledge and Understanding of the World
- Physical Development
- Creative Development.

At the end of Year 2, all pupils are assessed on the three core areas of Language and Communication, Mathematical Development and Personal and Social Development. Nationally pupils are expected to achieve Foundation Phase Outcome 5 at the end of Year 2. More able pupils should achieve Foundation Phase Outcome 6. In Foundation Phase, on any given day, children experience a carefully planned mix of indoor and outdoor learning. These activities will also have a mixture of teacher or teaching assistant led learning as well as independent group learning. All pupils in Reception had whole class samba lessons during the summer term with Gwent Music.



At age seven, going on eight, pupils move on to Year 3. Learning in years 3 - 6 (Key Stage 2) is planned using the National Curriculum, which was last updated in 2008. This curriculum has a clear focus on teaching of skills and covers maths, English, science, Welsh as a second language, history, geography, physical education, art and design, music and technology. Alongside this statutory curriculum, teachers use the non-statutory Skills Framework to build in progressive skills across each area. In 2013, the Welsh Government issued the Literacy and Numeracy Framework which aims to ensure that all pupils have a strong understanding of literacy and numeracy skills across the curriculum and are able to apply them to real life situations. In every lesson, children are exposed to literacy, numeracy, Welsh and information technology skills.

At the end of Year 6, all pupils are assessed on the four core areas of English, maths, science and Welsh. Nationally pupils are expected to achieve NC Level 4 at the end of Year 6. More able pupils should achieve NC Level 5 or occasionally higher.



During 2015/16, approximately 4% of pupils were registered as having an additional educational need. Around 47% of these pupils' needs were met by their class teacher and/or teaching assistant ('School Action'), 35% of these pupils received additional support from outside the school ('School Action +'), 6% of these pupils' needs were addressed through a SAPRA (School Action Plus Resource Assist / Additional funding short of a statement) and 12% of these pupils were in receipt of a statement of additional need. In all cases, apart from occasional withdrawal, all pupils with additional educational needs were taught alongside other pupils in the classroom. We worked with colleagues at Monmouthshire County Council and another school to support one pupil for part of the year.

To find out more about our curriculum and learning at The Dell [CLICK HERE](#) or visit dell.monmouthshire.sch.uk and go to the 'Learning' page.

The Language of the School

English is the everyday working language of the school. All pupils are taught through the medium of English.

Use of Welsh Language

Welsh language skills are taught in every class. Initially, much of the teaching takes place through incidental language during the course of the school day. Staff encourage pupils to use Welsh for everyday routine questions and requests as well as to hold simple conversations with other pupils and adults. Opportunities are given to develop pupils' oracy, reading and writing skills. We aim to create a Welsh ethos through introducing to children the history, art, music and geography of Wales. No pupils are exempt from Welsh language learning as this is part of the statutory National Curriculum in Wales.

To find out more about Welsh at The Dell visit [CLICK HERE](#) or go to our website



New Policies Adopted in 2015/16

During the year the Governing Body adopted a number of policies. At the start of the academic year, governors adopted the Safeguarding and Health and Safety policies put forward by the school. These

statutory policies must be reviewed and adopted annually by every school's governing body. They detail processes in these two key areas of the school's work. In addition, governors adopted policies for Use of Reasonable Force, Attendance (LA & School policies), Swimming and Counselling, Pastoral Care & Wellbeing.

Term Dates and Session Times

School Term Dates 2015/16

	Start	Half Term Starts	Half Term Ends	Term Ends
Autumn	1 Sep 2015	26 Oct 2015	30 Oct 2015	18 Dec 2015
Spring	4 Jan 2016	15 Feb 2016	19 Feb 2016	24 March 2016
Summer	11 Apr 2016	30 May 2016	3 Jun 2016	20 Jul 2016

School Term Dates 2016/17

	Start	Half Term Starts	Half Term Ends	Term Ends
Autumn	1 Sep 2016	24 Oct 2016	28 Oct 2016	16 Dec 2016
Spring	3 Jan 2017	20 Feb 2017	24 Feb 2017	7 April 2017
Summer	24 Apr 2017	29 May 2017	2 Jun 2017	21 Jul 2017

School Term Dates 2017/18

	Start	Half Term Starts	Half Term Ends	Term Ends
Autumn	4 Sept 2017	30 Oct 2017	3 Nov 2017	22 Dec 2017
Spring	8 Jan 2018	19 Feb 2018	23 Feb 2018	29 Mar 2018
Summer	16 April 2018	28 May 2018	1 June 2018	24 July 2018

	Foundation Phase Reception, Year 1, Year 2		Key Stage 2 Year 3, Year 4, Year 5, Year 6	
	Begin	End	Begin	End
Morning Session	9.00am	12.00pm	9.00am	12.00pm
Afternoon Session	1.15pm	3.30pm	1.00pm	3.30pm

Within a normal working week the number of hours spent on teaching is:

Foundation Phase	23 hours 20 minutes
Key Stage 2	24 hours 35 minutes

Changes to the School Prospectus

Apart from updating staff and governor names and current costs for school meals and after school club fees, there were no changes to the school prospectus.

To download our latest school prospectus [CLICK HERE](#) or visit dell.monmouthshire.sch.uk then go to the '24/7 Office' page then the 'Key School Documents' page.

Provision of Toilet Facilities

There have been no changes to the number of toilets during the year. We continue to work with MCC to improve toilet provision for the future.

Meetings held Following a Parental Petition

No meeting was held under Section 94 of the School Standards and Organisation (Wales) Act 2013.



www.dell.monmouthshire.sch.uk
[@thedellschool](#)

“...all about learning”